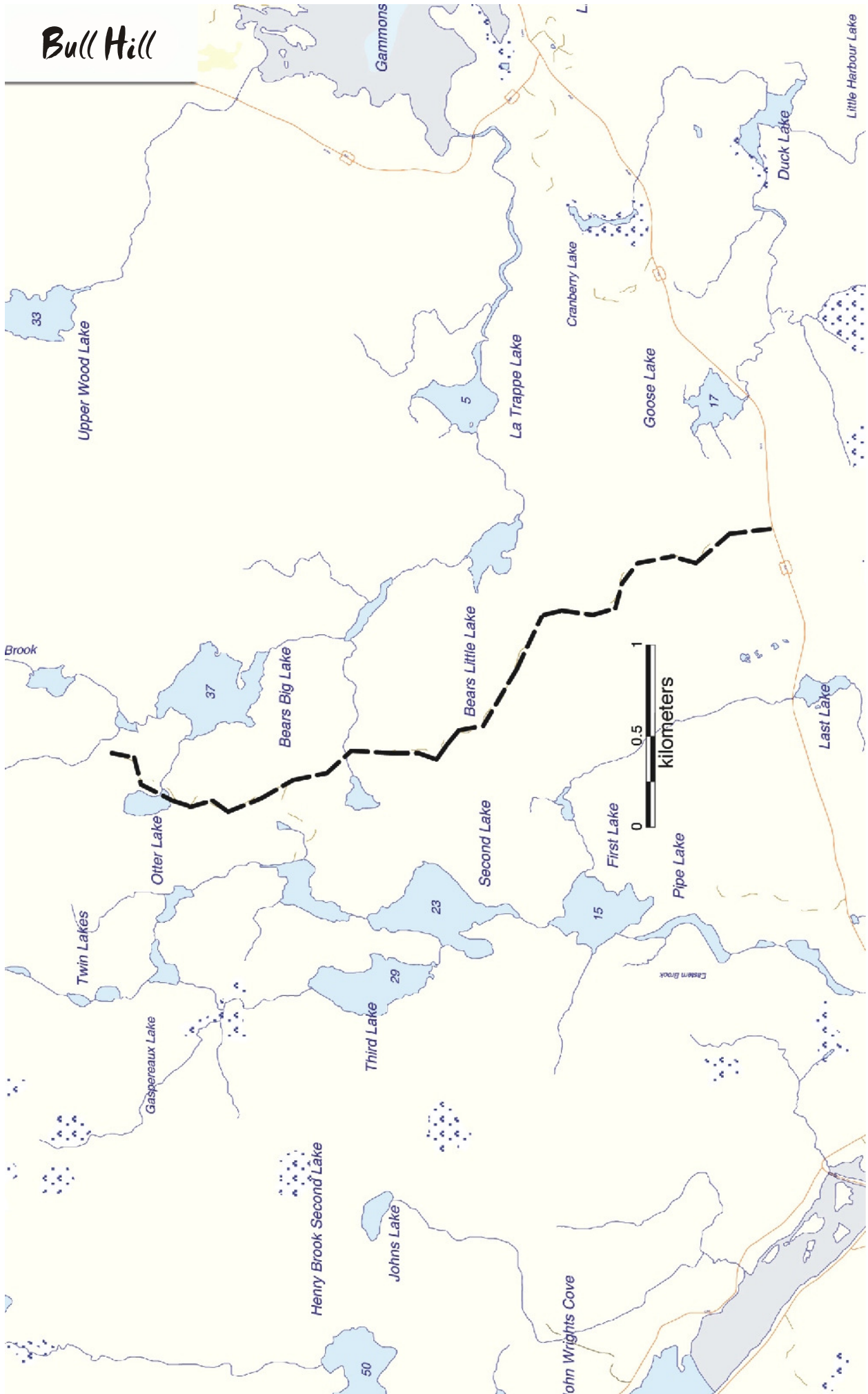


# Bull Hill



# Bull Hill

**Length:** 10 km return

**Time:** 4 hrs

**Type:** gravel road, natural path

**Facilities:** none

**Closest Amenities:** Larrys River

**Rating:** 3 (steep incline)



**Access Information:** From the village of Guysborough, travel east along Route 16 to the Larrys River turn off. Turn right onto this road traveling past Larrys River. You will arrive at a stop sign. Turn right (left will take you to Tor Bay Provincial Park). The trail head is 3.1 km from the stop sign on the right, and is an uphill, dirt road.

**Special Features:** Once an old fire road, this trail guides you through fields of blueberries and cranberries, speckled with granite boulders reminiscent of the miles of barren land in the area. With a series of uphill climbs, the wind-swept summit offers a view of New Harbour and surrounding lakes. The area is with toads, frogs, coyotes, deer, black bears, dragonflies, and various insects.

**Description:** Keeping in mind that the trail ends in the middle of barren, boggy land, you will be required to retrace your steps back to the entrance upon completion. Take water, wear bright clothing during hunting season, and bug repellent is recommended during the summer. Long pants and sleeves should also be worn as alder and lure bushes crowd the trail.

At the approximate halfway point, you will be rewarded with views from the summit of the hike. Take a moment here to enjoy the spectacular view of New Harbour, Tor Bay, Port Felix, the Atlantic Ocean, and surrounding lakes, such as First Lake, Second Lake and Bears Little Lake. Granite boulders scatter the area, cuddled by miles of berry bushes.

Continuing along this path, the trail narrows amidst the encroaching brush, as it follows a sharp descent (which will be a challenging climb on your return). Enjoy the hike through boggy fields which lead you to Bears Big Lake, where you may take this opportunity to climb upon a large rock, relax and take in the lovely panoramic view prior to making the return trek out.

